

WIKBIDOONG KINA GEGOO WII NDA ZHICHGENG MAANDA EN'WE'EG BIWGZIGE WENJISHZINOK NJI

Giigido Mzinigan Boozbiigewin Niinda'ah KinaDaa Kina Kojiing
Eteg Waa Nakaazang Natural Resources

Odemin Giizis Niizhing Mdaaswaag shi Niizhatana shi Nswi
Biboongad June 2023



Aki minaachtoong

Gonda (NWMO) nis'doo'waab'daan'aawaa ezhi nokii'waad zhiwe niibina Anishinaabeg end'no'kii'aad eko maaj'taa'waad go maanda ezhi naapkaazwaad. Nmaamiikwenmaanaanig dash go gonda Anishinaabeg miinwaa beshaa zhaagnaashii oodenwinhsan gaa bi wiidookaazjig manda ekwa niishtana nsa biboongag.

Nisda'waab'daanaa ge nango dankii'mi kitchi giowedinong miinwaa epgishmog Ontario nike'yaa gonda Wabigoon Lake endnakii'aad miinwaa da gete akiimwaa gonda Wabigoon Lake Ojibway Nation miinwaa Township wodi Ignace.

Wodi zhaawanong nikeyaa, ndoo nokiimi gete dinaakiiwin maaba Saugeen Anishinaabeg (SON) end'nakiiwaad, gonda Chippewas of Nawash Unceded Ntam Ezhgaabwidjig Anishnaabeg miinwaa Chippewas wodi Saugeen First Nation miinwaa go enaapkaazwaat South Bruce.

Nda nsidwi'naanaa dash maanda giowedinong miinwaa zhaawanong nikeyaa, ndaa'naa wii wii'ji nokiiwaang Ntam Ezhgaabwidjig miinwaa enaapkaazwaat, Aabtooziiinhyig miinwaa zhiwe end'nakiiyaat miinwaa gonda Aabtooziiinhyig enaapkaazwaat, miinwaa niibina ooden'winhsing besha zhiwe end'dawendmajig wii kendmowaat ezhi nakii'yaang.

Miidash owe ezhi piitendmaang maanda Naaskodaadwin, nda nsidwaabdaan'aa maanda gaa bi zhiwebag zhaazhi miinwaa maanda zhiingendwin Anishinaabeg etkweshkmoowaat pane. Nda debwenda'naa dash wii mna'doo'waang mino bimaadziwin zhinda oodenwising endji nokii'yaang.

AANKINOOTMOOWIN

Maanda mzinigan aawan bangii kina zhibiigaadeg maanda nji Wiikbidoong Da Zhichgeng En'we'eg Biwgzige Wenjishzinok zhaagnaashii'biigaadeg go kina miinwaa Wemtigoozhii biigaadeg zhinda ISRW website (<https://radwasteplanning.ca>). Maanda Bangii kina zhibiigaadeg da aankinoota'de niiwing nike'yaa – Cree, Anishinaabe, Inuktitut, miinwaa Michif French. Ka waabdan dash we dibaateg [What We Heard Report 2 – Indigenous Engagement](#) gego ankinoot'de go ga'ye zhinda niiwing minig ni'wew'ni nan. Pii giizhiikmaang, da chigaadenwoon [ISRW website Reports Page](#), miinwaa go yaabi aanind mziniganan Anishinaabemowin temgag.

BANGII KINA GEGOO DIBAATEG

KinaDaa go daa daapinaan maa'miik'wend'moowin maanda kitchi ntam gaabwid mzoowe akiing maanda nji aabijii'kang miinwaa wii boon tood ninda Biwgzige Biiyaabkoo'wii, ezh'gaab'wiimgak gazhi zhitoong niibina nsa biboon miinwaa mshkoo gaabwimgak ezhi kendaaswaat maanda biiyaabko'ii kendaaswin miinwaa waa zhichgeng wii maajiishkaatoong. Nango dash ooshmi go, Biwgzige Waasmoowin nsidwaabjigaade aapiji kitchi nakaazwin aawan wii tkweshkming bekish ezhwebag tkweshkming, wii debnaming gaa gegoo da sawebnigaadesnoo maage da ziigjiw'zinoo pii ni dgoshnang Niizhwaaswaag shi naanmidna biboongag miinwaa wii wekwendming ji tek owe zhaabwii'win miinwaa e zoongsing bembideg maanda pii mzoowe akiing miinwaa go giitaaying akiing ezhi znag'gaab'wi'ying. Debnam'ying dash o'gweji zhaa'ying aabdig wii temgag weweni miinwaa wenjishing biiyaabko'ii kendaaswin miinwaa waa nakaazang. KinaDaa enjbaajig miinwaa Anishinaabeg wii yaa'naawaa wii waankii'yendmoowaat wii temgag kitchi gbeying nda zhichgewin maanda nji en'we'eg biwgzigese wenjishzinok waa bi zhoo'wamgag.

KinaDaa Gimaakaaning zhaazhi gii maajtaawag nishitoowaad KinaDaa enwe'eg biwgzige wenjishzinok minzhaandming enaawkinamwaat waa mi sawebdeg, Ziizbaawkidake Giizis, Niizhing Mdaaswaag shi niizhtana shi nswi biboongag, wii naa'bi'i'mowaad naawkinige mzinigan nji enwe'eg biwgzige wenjishzinok minzhaandming miinwaa wii Shkwaa'taatoong. Bekish go maanda Kitchi Gimaakaaning wenjishzinok minzhaandwin mzinigan ginoowaabdaming, Degwaagig, Niizhing mdaaswaag shi niizhtana, Kina Daa Eniiganziikdang Kina Kojiing Eteg Waa Nakaazang (Natural Resources) gii naawkinaan Biwgzige Wenjishzinok Minzhaandming Enaapkaazjig (NWMO) wii niigaan'ziikdamnit enchikewang wii tkweshkadaading KinaDaa bemaadzidjig, Anishinaabeg miinwaa kitchi nokii gamigoon eniigaanzik'ying wii wiindmaage'aat ezhi maajiishkaamgag maanda Da Zhichgeng kitchi gbeying wii minzhaandming Da Zhichgewin Kina Daa en'we'eg Biw'gzi'ge wenjishzinok, mem'di'ge go noonch bangii maa'ge aabtoowi'ing wenjishzinok **megwaa gaawii gegoo naawkinigewin tesnoo**. Giin nsidwaabjigaade NWMO's niishtana shi biboon minig kitchi nokii'yaad giigidoowaad miinwaa ginoo'naawaad KinaDaa bemaadzidjig miinwaa Anishinaaben enaawkinige'yaat wii temgag waankiiwin, gbeying eminzhaanj'gaadeg gaana'kaazang biwgzige waasmowin mide. Maanda dash wii zhich'geng, NWMO gii kwej'maa'wag wii miigwe'yaat:

- Wii kinwaaj'biimoowaat megwaa wenjishzinok minshandwin Kina Daa minig miinwaa go minig waa ni zhi aawang, makwendming go minig megwaach bangii ge aawng'gibaa wenjishzinok, ezheyaamgag, tek, miinwaa genwendang owe wenjishzinok;
- Wiindmaagewin megwaa enaawkinigeng miinwaa ezhi maajiishkaamgag wii ni minabideg kitchi gbeying waa ani zhi miinzhaandming miinwaa waa zhi ziigwebnaming Kina Daa wenjishzinok miinwaa ewaab'ji'gaa'des'nok aabdig wii ginoowaabdaming;
- Weweni go wii kendming jii'k'ming maanda megwa miinwaa go wani zhiwebag enwe'eg biwgzige wenjishzinok maamwi kina zhibiigaadeg, miinwaa dgon'ming biiyaab'ko'ii naadmaadwin wii ni minzhaandming maage wii ziigwebnigeng noonch go tnow wenjishzinok miinwaa go gbe'ying waa ani zhi minzhaandming sanjgon gamigoon maanpii Kina Daa; miinwaa
- Wii makwendming maanda wii chigaadeg, wii nda zhichgeng, wii chi'gaadeg, miinwaa waa zhi mibdeg gbeying ninda wenjishzinok gamigoon waa zhi minzhaandming.

Maanda KinaDaa Wiikbidoong Kina Wii Nda Zhichgeng maanda Enwe'eg Biwgzige Wenjishzinok (ISRW) shki maajtaawin wii miikming maanda wenjishzinok minzhaandming maanpii KinaDaa. Mii go maanda shki tko'kiiwin, waa'ni zhi shki miikming wenjishzinok ziigweb'nige'win maanpii KinaDaa. Maanda Da Zhichgewin zhinda Kina Daa nta aawan miinwaa gibaak'waan zhiwe megwaa nsaawk'sing maage gegoo tesnok maanda nji wenjishzinok maanpii Kina Daa enwe'eg biwgzige wenjishzinok enjbideg zhiwe megwaa waasmoo'win'ii miinwaa zhichgaadeg owe maadziwin zhaabwii toong enkaazang, ginoowaabdaming ge waa ni zhi nakaazang gmaapiich.

Miidash owe eko miinding maanda waa'zhichgeng, kitchi piitendaagod maanda Da Zhichgewin ani zhinaagod go wii ani kitchi aa'wang ani naadmaagemgad go biiyaabko'ii dibishkoo egaa'ching nokii'waanhsan ani naadmaagemgag. Nindan nakii'waanhsan go ge da zhitoon wenjishzinok weweni ge minzhaan'ji'gaadegba. Maanda da zhichgewin gii zhibiigaade wii ni noonch go pideg wii de nokaazang wii dgob'jigaadeg zhiwe genji pideg zhiwe KinaDaa ezhi kinwaaj'biiged: memaanji niizaanag wenjishzinok miinwaa zhaazhi gaa nokaazang biwgzige waasmowin mide, aabtoowi'ying etemgag wenjishzinok, miinwaa noonch bangii wenjishzinok, miinwaa bkade'waabik moonigan miinwaa daashkboojigan

wenjishzinok. Maanda da zhichgewin gegwa gaanji zhichgaadeg wii minaadendji'gaadeg ga'ye Anishinaabe zhibiigewin naawknigewin miinwaa nsastaadwin miinwaa dash waa ani naabiisjigaadeg waani zhich'geng.

Maanda Da Zhichgewin wiindmaagemgad zhinda naawkinigewin enaawgidoong, gaa wiindmaagemgag gii tkweshkadaadwaad KinaDaa bemaadziidjig miinwaa Anishinaabeg gaa bi wiidookaazjig, miinwaa getchi kendaasjig gaa zhibiige'yaad maanda weweni gii ginoowaabdamwaad we pii. Pii dash maanda naawkinigewin enaawgidoong zhinoogemgag, mii maanda Da Zhichgeng gaawiin da kinwaabdaziin'naawaa maage da aankenziin'naawaa maanda naawkinigenwin enaawgidoong ezhbiigaadeg. Mii dash owe, manda wenbig ISRW waa wiikjitood wii zhiwebag gaa siwebideg wii aamdang kina wiya wodi Miin Giizis, Niizhing mdaaswaag shi niishtana shi niizh bangii gii aanj'biigaa'denwan wii miikwseg maanda naawkinigewin enaawgidoong.

Maanda Da Zhichgeng zhitoon niizh getchi piitendaawk'kin wiindmaagewinan ge zhiwebkiba miinwaa niwin zhinoomaagewinan wii temgag naa KinaDaa wii yang kitchi gbeying ge zhi ziigwebnigeng maanda nji enwe'eg biwgzige wenjishzinok. Ninda waa wiindmaagemgag ge zhiwebkiba miinwaa waa zhinoomaagemgag zhibiigaadenwan miinwaa weweni dibaachigaadenwan zhinda:

Recommendation 1	Intermediate-level waste and non-fuel high-level waste to be disposed of in a deep geological repository with implementation by the NWMO
Recommendation 2	Low-level waste to be disposed of in multiple near surface disposal facilities with implementation by waste generators and waste owners
Implementing principle 1	Consent of the local communities and Indigenous peoples in whose territory future facilities will be planned must be obtained in siting.
Implementing principle 2	Design of facilities should prioritize the protection of water.
Implementing principle 3	Long-term caretaking should be established for disposal facilities.
Implementing principle 4	We need to take action now and not defer to future generations.

KINWAAD'DEG MEZNIBII'GAADEG:

Ewiikjichgaadeg wii Zhiwebag 1	Aabtoo'wiyig etemgag wenjishzinok miinwaa gaawii gegoo mide wii ziigwebnigeng zhiwe kitchi naamkamik wii nokiitang maaba NWMO
Ewiikjichgaadeg wii Zhiwebag 2	Noonch Bangii wenjishzinok wii ziigwebnigaadeg niibina go zhiwe gamigong wii nokiichigaadeg zhinda wenjishzinok nokiyaanhsan miinwaa wenjishzinok debendjig.
Waa Zhichgeng 1	Wii debwetamwaad gonda oodenwisan miinwaa Anishinaabeg zhiwe besha eyaadjig wanji nokiitoong ezhi naawkinigeyaad aabdig wii temgad.
Waa Zhichgeng 2	Waa zhi zhitoong ninda waa nji sanjgoong aabdig wii mkwenjgaade nibi.
Waa Zhichgeng 3	Kitchi gbeying wii naagdoowenjigaadeg waanji sanjgoong daa temgad.

Waa Zhichgeng 4	Aabdig kwii nda zhichgemi nango gaawii ka penmand'waa'sii'naa'nig gonda eshki maadzidjig waa bi yaadjig.
-----------------	--

Enwe'eg Biwgzige Wenjishzinok KinaDaa

KinaDaa aapiji kitchi niigaanzi maanda maajiishkaamgak miinwaa nokaazang biwgzige waasmowin biyaabko'ii zhaazhi ooshmi naanmidnaa nsa biboon, penmandming biwgzige waasmowin tinow wii mibdeg waasmowin oodenwising miinwaa wii miigweng (radioisotopes) wodi biwgzige waasmowin mshkiki miinwaa aanind go yaabi eshki aawang dakenjgewin, miinwaa getchi aawang Kitchi nokiwin waanakaazang. Ninda tinow nakmigag zhitoonaawaa enwe'eg biwgzige wenjishzinok ezhi nangjigaadek minig ezhi gbaakwaming miinwaa aabdig minig waa nchikew'sing ji de waankii'yaat gonaa bemaadzidjig miinwaa kina go giitaaying. KinaDaa dash tenwan niwin tinow enwe'eg biwgzige wenjishzinok:

- Memaanji Niizaanak Wenjishzinok (HLW);
- Aabtoo'wiyig Etem'gag Wenjishzinok (ILW);
- Noonch Bangii Wenjishzinok (LLW); miinwaa
- Mkadewaabik moonigan miinwaa daashkboojganing wenjishzinok.

Kina go ensa zhin'aagok wenjishzinok nindwendaan ga'ye go wiin da sanjgon miinwaa waa zhi ziigwebnigeng naasaab go ezhi tkoosing maage ezhi gnoosing niizaanziwin maanda nji enwe'eg biwgzigeseg maage tinow gzhide'win ewiik'waasing. Kina enwe'eg biwgzige wenjishzinok maanpii Kina Daa go weweni eminzhaanjgaadeg go bekish kina go goji maanpii akiing dibishkoo go ezhi dibaamjigaadeg go kina maanpii akiing maaba Canadian Nuclear Safety Commission (CNSC). Gaa dash wiigo kina enwe'eg biwgzigan wenjishzinok daa'aaziin noom'og waa zhi naagdawendang.

Gaawiin gegoo tesnoo waa zhi ziigwebnaming enwe'eg biwgzige wenjishzinok maanpii KinaDaa

Maanpii niisa'ying zhinoomaagemgad megwaach gonaa minig ge koobiigba'ne miinwaa ge zhi dibizhgaadegba maanda enwe'eg biwgzige wenjishzinok tesnog gaawiin gegoo kitchi gbeying waa zhi ziigwebnigeng ga kidang go wii temgag maanpii epiichi naabiisjigaadeg maanda Da Zhichgewin. Maanda aawan megwaa ezhnaagok miinwaa go enwaad'deg waa ani zhinaagok dibaamdaming gonaa megwaa etegin biwgzige waasmowin gamigoon. Kitchi aawan wiigwa kendming nshwaasmidna shi niwin piichi ngodwaag go maanda wenjishzinok maanpii KinaDaa temgad waa ni zhi minzhaandming enwe'eg biwgzige wenjishzinok. Mdaaswi shi ngodwaaswi piichi ngodwaag dash maanda kina wenjishzinok gaawiin gegoo tesnoo waa zhi ginawenjgaadeg. Mdaaswi shi niwin piichi ngodwaag aawan bangii yaawang wenjishzinok, miinwaa niizh piichi ngodwaag aawan eta nowgowiing ezhi dibizhgaadeg wenjishzinok temgad. 0.01 per cent minig ekoobiig kina go eyaawang gaawiin gegoo mide tinow wenjishzinok.

Bezhiig kinwaachgan: Wenjishzinok gaawii gegoo waa zhi ziigwebnigeng kitchi gbeying

Tinow Wenjishzinok	Ekoobiik(m)3	Minig ezhi dbizhming kina maamwi en'we'eg biwgzigeseg wenjishzinok KinaDaa
Memaanji Niizaanag wenjishzinok (gaawii gegoo mide)	<10	<0.01
Aabtoo'wiyig Etem'gag wenjishzinok	51,000	2

Noonch Bangii wenjishzinok	294,000	14
Mkade'waabik moonigan miinwaa daashkboojigan	Gaawii gegoo tesnoo Wii bi temgag go waa zhichgeng	–
Megwaach nshwaasmidna shi niwin piichi ngodwaag minig enwe'eg biiwgzigge wenjishzinok maanpii Kina Daa temgad waa zhi zgaknaming naawkinige'winan.		

Biiyaab'koo'ii Gezhichigengba miinwaa ezhi zigakzing'gin

Ginoowaabdaming maanda bezhig mzoowe kinwaa'chigan, ninda tenwan ge wenaamjigaadegban wii nokaazang zhiwe gegoo tesnog wii chigaadeg maanda kitchi gbeying wii sanjgong enwe'eg biwgzigge wenjishzinok memdige go bangii miinwaa nowgo'ing wenjishzinok maanpii Kina Daa. Aankenmoondwaa Naagdowenjgewin gaawin da penmanjigaadesnoo miinwaa gaawii awzinoo ge zhichgengba zhinda mzoowe akiing enaawg'doowaat weweni wii zhichgeng. Aanwi dash wiigo, gii digoon'gaade pii gii tkweshkadaading wii wiindmoondwaa ewiidookaazjig wii temgag wiigo kitchi gbeying waa zhi minzhaandming maanda ge zhichgengba (sanjgong miinwaa ziigwebnigewin) naagdoong waa'zhi nishing dibaajmoowin wani zhichgeng.

Besha giji akiing ziigwebnigewin

1. [Enokiichigaadeg Wii Taasang Wow'ye'aag Gamig = Engineered containment mound](#)
2. [Kitchi Sinii Mkak = Concrete vault](#)
3. [Moonaming Wii Sanjoong = Shallow rock cavern](#)
4. Kitchi Naamkamig Wii Taasang Etemgag:
5. [Kitchi Moonigan = Deep geological repository](#)
6. [Kitchi Waankaagan = Deep borehole](#)
7. Kitchi gbeying wii taasang:
8. [Aankenmowin Naagdoowenjgewin = Rolling stewardship](#)
9. Ninda ge zhichgengba gii dibizhgaadenwan biiyaabko'ii gii zhi ginoowaabjigaadenwan ekoobiigyn miinwaa ezhe'yaamgag ninda bangii miinwaa aabto wi'ying ezheyaamgag gaa miigwe'yaat wii maajiibdeg gegoo kitchi nokiwin nokiwinan miinwaa go owe wenjishzinok de'bendgig. Ekoobiig gii dibaam'daanaawaa megwaa etemgag maanda CANDU (Canada Deuterium Uranium) (reactor fleet) miinwaa piichi gbeying waa maadziimgag miinwaa dash gaawii gii tesnoo ekoobiig owe wenjishzinok ge tegba emaawnjising zhinda ge'bi'tegba nokaazang (Egaaching Baamskobdegin Wii Maajiibdeg Gegoo - Modular Reactors (SMR). [cost estimates](#) Weweni go wii ginawaabjigaadeg miinwaa wii skoonwikdaming waa nang'deg wii zhichgeng zhinda noonch biiyaabko'ii gii zhichgem wii dbizhming noonch ge zhichgengba.
10. Mii dash maanda nji biiyaabko'ii dibizhgan, KinaDaa etemgag bangii yaawang wenjishzinok daa ziigwebnigaade zhiwe besha akiing etemgag ziigwebnige gamigoon debaachigaadegin zhinda shpiming. Na'ye dash wiigo owe enokiichigaadeg ewaaw'ye'aag sanjgon mii owe memaanji minasing miinwaa noonch daashti engend'deg wii chigaadeg maanda egpak'sing bangii eyaawang wenjishzinok dibishko zhashk'aki, miinwaa bangii temgag (radionuclides) miinwaa kitchi niibina go maanda tinow wenjishzinok. Maanda sin'ii mkak sanjgon zhi nishin wii taasang

noonch bangii yaawang wenjishzinok, zhiwe go temgag ooshmi wii zgaknigeng miinwaa go ooshmi mechaamgag wii zgagtaasang miinwaa ooshmi waankii'yendaagog maanda sanjgon; miinwaa daapnaming owapiitendaagog go bekish, ooshmi go wiigwa miiwk'se jiwii chigaadeg gepgaasnok enwe'eg biwgzige wenjishzinok.

11. Mii dash maanda nji biyaabko'ii dibizhgan, ezhi ziigwebnigeng etemgag nji maanda aabtoo'wiying etemgag wenjishzinok daa aawan aapiji getchi waankaadeg maag'ge kitchi waan'kaa'gan. Na'ye dash wiigwa, ge maan'ji nishingba getchi waankaadeg sanjgon, na'ye dash maanda kitchi waan'kaagan gii mki'gaa'de ooshmi mdaaswaag nching ooshmi shpang'de piichi ngod'zit minig wenjishzinok. Na'ye dash wiigwa, maanda kitchi waankagan de zhi gshkitmaasii wii ziigwebnang maanda aabtoo'wiying etemgag wenjishzinok nzaam gaawii de piichii'siimgad.

Wiikbidoong Da Zhichgewin

Niizha biboong wgii tkweshkadaadwag KinaDaa bemaadziidjig, Anishinaabeg miinwaa kitchi nokiwin ezhaabwidjig, miinwaa gii ginoowaabdaan'naawaa maanda mzoowe ge nishingba zhi nokiing wii debnaming emaanji biyaabko'ii ge zhichgengba, gonda NWMO gii zhitoonaawaa maanda Wiikbidoong Da Zhichgewin nji maanda noonch enwe'eg biwgzige wenjishzinok be mi pidek KinaDaa. Nswi tenoon gegoo tesnog wii ziigwebnaming ge zhichgengba maanda nji noonch yaawang, now'gowing yaawang miinwaa gaawii gegoo mide memaanji niizaanak go enwe'eg biwgzige wenjishzinok.

Wii ginawaabdaming dash ninda gegoo tesnog miinwaa ji naasaab jiikmang ga'ye maaba NWMO gaa noondang kidwaad emshkoo tkwa'kiiijig miinwaa Anishinaabeg miinwaa ezhaamgag maanda Naawgdoo mzinigan, niizh tenwan gaa kidwaad jiwii zhabwebkibaa, miinwaa niwin tenwan ge naagdoongba gaa zhichgaadegin naa KinaDaa wii yang wanji ziigwebnang enwe'eg biwgzige wenjishzinok. Maanda nda zhichgeng zhinoomaagen owe zhibewganing zhinda niisaying; gaa dash wiigwa da gjwep'shka'ziin megwaa bembideg kitchi gbeying zhaazhi, da dgo'jiinaa'naa'aan go.

Eko Niizhing 2: Kinwaachgan Miinawaa Niigaan Kina Wenjishzinok

Kinwaachgan Ezhi Dibizhgaadeg	Tinow Wenjishzinok	Etemgag megwaa Waa zhi ziiigwebnigen g kitchi gbeying	Wenesh enangshed maanda wii maajiishkaag?	Wiikbidoong Da Zhichgewin
Memaanji Niizaanag Wenjishzinok (HLW)	Zhaazhi gaa nakaazang mide	Enh	NWMO	Gaawii gegoo - aandsesnoo Kitchi Moonigan Naamkamig
	Gaawiin gegoo mide	Gaawiin	–	Kitchi Naamkamig moonigan naangzhewin wii maajtaatoowaad kitchi gbeying waa zhi ziiigwebnigeng : NWMO
Aabtoo'wiying -Etemgag Wenjishzinok (ILW)	Now'go'ying etemgag wenjishzinok gaa zhichgaadeg biwgzige waasmowin gamigong miinwaa Whiteshell Reactor 1	Gaawiin	–	Aabtoo'wiying -Etemgag Aki Gaawii gegoo aandsesnoo situ shkwaasemgad: NWMO
	ILW eshchigaadeg zhiwe Biwgzige Waasmowin Skoongamig miinwaa Whiteshell Reactor 1	Enh	KinaDaa Nuclear Laboratories	Gaawiin gegoo - aandsesnoo-situ shkwaasemgad
Noonch Bangii Yaawang Wenjishzinok (LLW)	Port Hope gete gtigaan LLW	Enh	KinaDaa Nuclear Laboratories	Gaawiin gegoo -Aandsesnoo Port Hope nika'yaa naagdoowendaa'naawaa
	LLW dibendaagod Atomic Energy of Canada Limited wodi Chalk River	Enh	KinaDaa Nuclear Laboratories	Gaawiin gegoo - aandsesnoo- Besha akiing ji ziiigwebnigem
	LLW eshchigaadeg wodi Biwgzige Waasmowin gamig miinwaa Skoongamig miinwaa Whiteshell Reactor 1	Enh	KinaDaa Nuclear Laboratories	Gaawiin gegoo -aandsesnoo situ shkwaasemgad
	LLW eshchigaadeg zhiwe noonch go biwgzige waasmowin gamigoon	Gaawiin	–	Niibina go tenwan besha gija'ing akiing ziiigwebnige gamigoong Nendaawgziwag wii mibde'toowaad kitchi gbeying waanji ziiigwebnigeng naawknigewin: Wenjishzinok nakiiwinan/debenjgejig

Mkade'waabig Moonigan miinwaa daashkboojiga n ¹	Eshkwaseg sajgon gamig besha zhiwe endji nokiing	Enh	Mkade'waabig moonigan miinwaa daashkboojigan eshkwaaseg nokiwinan miinwaa kitchi gimaanaang mzoowe miinwaa ezhi bebezhgong kitchi gimaa kaanan	Gaawin gegoo -aandsesnoo Ziigwebnige gamigoon besha zhiwe endji zhichgaadeg
--	--	-----	--	--

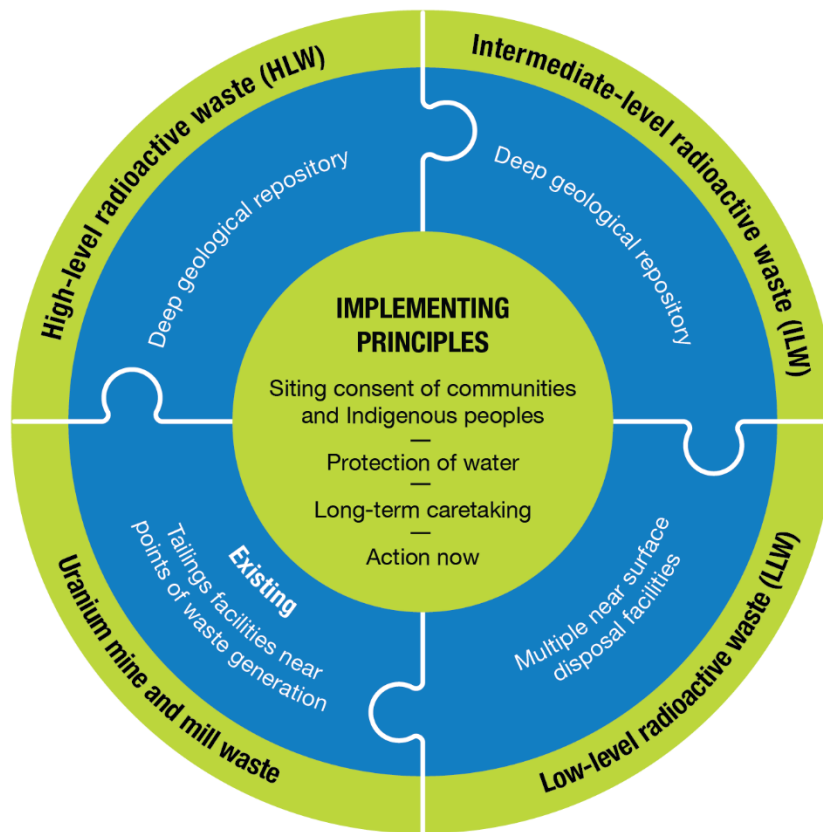


Figure 1: Canada's Integrated Strategy for Radioactive Waste

KINWAAD'DEG MEZNIBII'GAADEG:

Biinji wow'yed'wan	Nokii'toong naawg'dowin'an: Aabdig wii debwetmoog ooden'winhsan miinwaa Anishinaabeg – Naagdoo'wenjgaa'de nibi - Kitchi gbeying wii naagdoowendmookiim - Nda zhichgem be go
--------------------	---

Gij'aa'ying nmanj ni'keyaag Zaag'ja'ying wow'yed'wan	Memaanji niizaanak go en'we'eg biwgzige'se wenjishzinok (HLW)
Gija'ying biinji wow'yed'wan	Kitchi moonigan
Gija'ying aatwaa'ying zaag'ja ying wow'yed'wan	Aabtoo'wiyng etemgag enwe'eg biwgzig'eseg wenjishzinok (ILW)
Gija'ying biinja'ying Wow'yed'wan	Kitchi moonigan
Nii'sa'ying aatwaa'ying Zaag'ja'ying wow'yed'wan	Noonch Bangii en'we'eg biwg'zi'ge'seg wenjishzinok (LLW)
Nii'sa'ying biinji wow'yed'wan	Niibina beshha etegin giji akiing ziig'web'ni'ge gamigoon
Niisa'ying nmanj ni'keyaag Zaag'ja'ying wow'yed'wan	Mkade'waabik Moonigan miinwaa Daashkoojigan Wenjishzinok
Niisa'ying biinji wow'yed'wan	Megwaa Eshkoseg Chigaadeg gamigoon wodi wenjishzinok enji mown'jiseg zhichgaadeg

Ewiikjichigaadeg Ge zhawepkiba miinwaa ge naag'doong'ba wii maajibdeg KinaDaa Wiikbidoong Kina Gegoo Wii Nda Zhichgeng nji enwe'eg biwgzige wenjishzinok

Ewiikjichigaadeg ge zhawepkiba

EWIJKJICHGAADeg GE ZHAWEPKIBA 1: AABTOOWI'YING ETEMGAG WENJISHZINOK MIINWAA GAAWII GEGOO MIDE MEMAANJI NIIZAANAK WENJISHZINOK WAA ZIGWEBNIGAADeg ENDJI KITCHI GNOOSING WAANKAAN WII MAAJII'BDE'TOO'NAA'WAA GONDA NWMO

- Gonda NWMO, KinaDaa eniiganziikdang'gik enaapkaazwaat gonda getchi ginoowaag waakaan, wii toowaad miinwaa wii zhitoowaad getchi ginoowaakaan maanda KinaDaa aabtoo'wiyng etemgag wenjishzinok (ILW) miinwaa gaawii gegoo mide tesnoog (HLW) memaanji niizaanak wenjishzinok(HLW), debamwaat gonda wenjishzinok eshtoodjig miinwaa wenjishzinok debendgig.
- Gonda NWMO ji zhitoowaad weweni ezhbii'gaadeg waa zhichgeng zhibiigaadeg waa zhi gwen'waab'daming wii chigaadeg manda sanjgon, makwendming go maanda gaa bi zhichgeng miinwaa gaa bi kendming zhaazhi gaa bi zhichgeng gii maajtaatoong aanind temgag biwgzige waasmowin gamigon. Maanda gwenwaabjigaadeg wii temgag bkaanad ga'ye owe NWMO dinkiiwin jiiik'ang KinaDaa zhaazhi gaa nakaazang biwgzige waasmowin mide.
- Maanda naawkinigewin wii zhinoomaagemgad giishpin owe biyaabko'ii miinwaa ji mina daapni'gaadeg'bane wii temgag waankaawin, ezhbiiigaadeg ga'ye zhiwe Naawgdoo'mziniganing miinwaa nakaazang niwe naawgdoo'winan ezhbiiigaadeg pa'ne.

- Maanda naawkinigewin wii digwaabiisin egwedji miwkseg pii ekidang wii giizhii'taamgag wii chigaadeg miinwaa wii zhitoong maanda kitchi waankaawin.
- Baabiichgaade dash megwaach ngo biboon piinish ngo biboon shi aapta daa jitaamgad wii waa'wiindming wii temgag maanda waankaawin, miidash we pii NWMO ji wiindmaaget wodi Kina Kojiing Eteg Waa Nakaazang - KinaDaa waa zhichgeng.

EWIJKJICHGAADEG GE ZHAWEPKIBA 2: BANGII YAAWANG WENJISHZINOK DA ZIIGWEBNIGAADE ZHIWE NIIBNA ENCHING BESHA GIJI AKIING GAMIGOON WII MAAJTAATOOWAAD GONDA WENJISHZINOK EMAAJIIBDEK NOKIWINAN MIINWAA WENJISHZINOK DEBENDGIK.

- Wenjishzinok emajjibdek nokiwinan miinwaa wenjishzinok debendgik wii bdaksidoowaat miinwaa wii zhitoowaad waanji ziigwebnigeng besha giji akiing wii chigaadeg noonch bangii wenjishzinok gaadash wiigo gegoo tesnoo gbeying waa zhi ginoowendming maanda ziigwebnigewin, ge zhi miw'sek ga'ye kina mzoowe kina goji minachigeng mino nokiwinin, makwendming ezheyaamgag, ekoobiig, miinwaa pichi besha maage waasa etegwenh megwaa bembideg wenjishzinok ezhi ginowendjgaadeg, oodenwinhs ezhi daapinang miinwaa biyaapko'ii ezhi nakiimgag.
- Ninda niibina nching wenjishzinok zhichgaadeg gamigon maage go nowgoying ji tegba zhinda besha daa dakenjigaademgad nzaam ji weksidjgaadeg minig etemgag miinwaa piichi waasa waa miwjigaadegwenh. Nowgoying etemgag ninda besha gamigon daa miigwen gezhi gshkitchgengba minig go etegwenh miinwaa ji miigwemgag enishing wii zhaamgag enji ziigwebnigeng noonch bangii wenjishzinok wii mibdeg zhiwe egaaching wenjishzinok nokiin'waanhsan. Zhiwe dash go besha eta tegin gamigon go daa aawnoon zhiwe yaawang gimaakaan nika'yaa, miinwaa daa gbage gimaa kaanan maage go niibina gamigoon zhinda bezhig gimaa'kaan, manj dash go iidig minig ekoobiigwenh wenjishzinok, waa zhaamgak minik waa zhi mibdek miinwaa waa nangdek.
- Yaabi go ooshmi ewiindmaagemgak waa zhichgeng zhinda wenjishzinok mibde nokii'waanhsan miinwaa wenjishzinok debendgik wii zhichgaade ji waabdaming miinwaa wii zhibaa'amdaming, miinwaa wiiba miinwaa wii aabjibdeg ezhi naagdoong maanda Naawgdoo Mzinigan.

Mibde'toong Naagdoowinan:

Miidash zhiwe kinwaajtoong gii kitchi giigidang gonda KinaDaa bemaadziidjig miinwaa Anishinaabeg, ninda niwin genaagidoong zhinoomaawgewinan gnawaabjigaadenoon emaanji shpendaagok nji gegoo shka'ye wenjishzinok wii zhichgaadeg maanpii Da Zhichgeng; di'baa'tenwan go ninda yaabi eko niwing 4 zhi baakiignigaadeg zhiwe mziniganing.

MIBDE'TOONG NAAGDOO'WINAN 1: WII DEB'WE'WENDMOOWAAT ODENWINHSAN MIINWAA ANISHNAABEG ZHINDA BESHA ENDNAKII'YAAT NINDA WAABI TEGIN GAMIGON WII CHIGAADeg AABDIG WII TEMGAG.

Maanda mkwendmowin gii kitchi piitendaanaawaa gonda kitchi niibina go gaa bi wiidookaazjig zhinda gii tkweshkadaading. Wii debwetmang dash dawendaagod gonda besha zhiwe gaa psi'kaagwaad Anishinaabe kwiin'winan miinwaa dash aabdig wiii dibishkooseg KinaDaa ezhi dibaamdang wii temgag wii zhii'baaw'dood maanda *United Nations Declaration on the Right of Indigenous Peoples Act (UNDA)*. Maanda kitchi dibaamjigewin sa'wesh'ka piinish go waa ani zhi temgag ziigwebnige gamigoon nji enwe'eg biwgzige wenjishzinok. Anishinaabe oodenwising temgag wii baawkinigeng aabdeg wii temgad wiiba miinwaa gegoo engindeg nbochidwin miinwaa go yaabjitaamgag zhichgewin kina go ninda ezghaabwiimgag wenjishzinok ziigwebnigewin nankiwin, manjgo ge nik'ko'gwenh, ge de biinjibidegwenh minik maanpii eko kshkitoong go zhichge'yaat Anishinaabeg, miinwaa miigweng kenjgewin miinwaa matookiing owe ekendming. Miinwaa dash go yaabi, naawkinigewinan, ezhi dibaam'da'kweng, miinwaa Anishinaabe dakenjgewinan naawkinigewinan, da zhichgaadeg miinwaa nakaazang zhiwe besha sanjgon gamigoon wii temgag, daa mnenjigaade.

MIBDE'TOONG NAAGDOO'WINAN 2: NIZHGAN WAA ZHINAAGOG NINDA GAMIGON DAA MKWENJGADE MIINWAA DAA NAAG'DOO'WEN'DAA'NAA'WAA NIBI ETEMGAG ZHIWE BESHA

Maanda Naawgdoo mzinigan ndawendaan enwe'eg biwgzige wenjishzinok minzhaandmowin, miinwaa ziigwebnigewin aabdig wii zhaabwiichgaadeg kina gegoo wii digobdoong ge kitchi piitendang mino bimaadzowin, waankiiwin, miinwaa wii naagdoo'wendmindwaa bemaadziidjig, kina go goji miinwaa nibi. Aanwi go waankiiwin go da zhinoomaagemgad maanpii biiyaabko'ii nike'yaa dibiidig go, daa znagad wiigwa wii debnigaadeg kina go zhiwe giitaa'ying bemaadziidjig wii mino daapnamwaad ninda enji ziigwebnigeng temgag besha enjbaamgag menkweng nibi. Maanda aapiji gii kitchi piitenjgaade pii gonda gii bizhaa'aat gaa wiidookaazjig nzaam da binaadad nibi miidash ji bnaadag ezhi bimaadziwaad. Gonda gaa bi wiidookaazjig gii zhinoomaagenaawaa ninda gamigoon daa tenwan kitchi waasaa nibiing, miidash wiigwa ezhnaagwag maanda KinaDaa akiing gawii maanda da de zhiwebsinoo. Naagdoowenjgaadeg nibi aapiji kitchi aawan, miidash gegoo wii temgag wanji ziigwebnigeng aabdig wii tkweshkdaadming memaanji shpaag go naagdowin kina go goji miinwaa nibi naagdoowendming.

MIBDE'TOONG NAAGDOO'WINAN 3: GBEYING WII NAAGDOOWENJGAADeg NINDA WII ZIIGWEBNIGe GAMIGON DAA TEMGAD.

Daa temgad go wii baashzaamdamming maanda wenjishzinok miinwaa ninda gamigon etegin miinwaa waa zhichgaadegin go gonda waa bi yaadjig nendmoowaat miinwaa maanda kina goji kojiing weweni wii naagdoowenjgaadeg. Miidash maanda edming owe kendming tanoowan wenjishzinok, dibiidig tegwenh, miinwaa ezhi dibaamdaming aabdig wii kinoo'mo'waa'wag gonda waani aanke yaadjig miinwaa endgwenh ji depseg maage jiwii ndawendaagok. Mii maanda ezhbiigaadeg zhiwe naagdoo mziniganing, zhiwe "nsastaming piichi gbeying etemgak wii minzhaandming maanda enwe'eg biwgzigan wenjishzinok miinwaa aabdeg wii temgag waazhi mshkoogaabwiimgak miinwaa weweni wii naagdoowenjgaadeg aabdeg wii naagdoowendaagok enwe'eg biwgzigan wenjishzinok gamig'oon temgak miinwaa zhinda temgak pii gibaak'ko'gaadeg, miidash pii gbaak'ko'gaadeg da waankii wag bemaadziidjig miinwaa go zhiwe kina giitaa'ying pane go." Miinwaa dash go, Anishinaabe oodenwinhsan temgag maanda biwgzige waasmoowin wenjishzinok ninda wanji sanjgoong da dibaachigaade waa zhi ginoowendming aki. Miigwa maanda ezhi naabiising nendwendaagok nji wenjishzinok nokii'waanhsan miinwaa wenjishzinok de'bendgik wii wiii nokii'aa'aat Anishinaaben jiwii debnamwaat ooshmi nsas'taadwin miinwaa ga'ye ezhi kendmoo'waat maanda enwe'eg biwgzige wenjishzinok minzhaanjgewin miinwaa pii boon'toong ni'we zhaazhi gaa mib'degin.

MIBDE'TOONG NAAGDOO'WINAN 4: AABDIG KWII ZHICHGEMI MIINWAA KWII NAAG'DOO'WEN'DAA'NAA MAANDA MBE GAAWIIN MAMDAA WII NI AANKEN'MO'WAA'YING GONDA WAA NI YAADJIG.

Aabdeg go wii temgag miinwaa wii Wiikbijigaadeg Da Zhichgeng kina maanpii KinaDaa enwe'eg biwgzige wenjishzinok we'wiip go gaawii wii penmandwindwaa gonda waa ni yaadjik. Miigwa maanda ezhbiigaadeg Naawgdowin mziniganing ezhi dawenmigaazwaat gonda wenjishzinok debendigik miinwaa nokiiw'winan gaynwaa waa'zhi mina giik'shkaa'aat, waa zhi maaj'taa'waat miinwaa waa zhi mibde'too'waat getchi nsastaagwag weweni miinwaa mzoowe ewiikbijigaadeg enwe'eg biwgzige wenjishzinok minzhaandming ge minab'degba weweni pii aawang, miinwaa pii waa shkwaa'taa'toong, zhiwe temgag, pii ndawendaagog wiii ani gaach'toong jibwaa kitchi miw'daas'waat gonda waa bi yaadjig. Maanda maajii bide'm'gag nokaazang, ISRW da dawendaa'naa'waa wii aab'jib'dem'gag nendmoowin miinwaa wii assgaabwi'taa'ge'aat kitchi gimaa'naang, miinwaa wii temgag wii mshkoo tkokii'yaat naa wii kshkit'maa'aat wii miigwe'aat ezhbiigaadeg maanpii Da Zhichgewining aan'gaabwi'yaat gegoo kitchi Gimaa'naang. Maanda wii we'wiip'taang zhichgeng aabdeg wii mina naabiis'jigeng ga'ye Kitchi Gimaa'naang ezhi ndoowendang wii naasko'waa'aat Anishinaaben.

Bangii dibaateg gii tkweshkdaading

Eko niizhing mdaaswaag shi niizhtana shi bezhig biboongag, NWMO gii maajtaawag tkweshkdaad'waat ninda wenjishzinok nokii'winan miinwaa wenjishzinok debendgik miinwaa go KinaDaa bemaadzidjik waa nda kendgik enkamgak, miinwaa Anishinaaben wii zhitoo'waat dane'moo'waat bemaadzidjig enendmoo'waat miinwaa zhitoo'waat owe tkwesh'kdaadwin wii noondmoo'waat noonch kidang , miinwaa wii bizindwind'waa bemaadzidjig noonch zhinda odenwinhsan tkweshkadaad'ing maanda wenjishzinog enji sanjgong, miinwaa wiiwkige'waad wii nbochid'waat, miinwaa naa'biis'doo'waat biiyaabko'ii zhi kendmaaw'zi'win. Kina dash go, NWMO gii tkwesh'ka'daad'wag ooshmi niizhwaaswi shi naanan nching tanoowan nakmiigziwin noonch go gegoo nika'yaa (waabdan mzinsing 2) gii maajtaawag Manidoo Giizis, Niizhing mdaaswag shi niizhtana shi bezhig piinish Nimebine Giizis, Niizhing mdaaswaag shi niizhtana shi nswi biboongag, miinwaa ooshmi niwing shi mdaaswaag ewiidookaazjig. NWMO go aapiji kitchi piitendaanaawaa wii wiindmaage'yaat ezhwebag zhinda tkweshkadaadwin miinwaa gii zhitoo'naawaa waanji pko'dbi'waat ooshmi wii wiindmoo'waa'at ewiidookaazjig kina gegoo nji enokiyaat - radwasteplanning.ca

Anishinaabe Tkweshkadaading

NWMO aapiji kitchi piitendaan wii naaskoo'waat miinwaa wii aabiji mina naangoom'at Anishinaaben miinwaa da kwiin'winwaa gegoo gonaa wii da'ming.

Bekish go maanda tkweshkdaadwin Wiikbidoong Da Zhichgeng, maaba NWMO gii gijitoo wii debnang Anishinaabe ezhi ginoo'waabdang miinwaa ezhi mkoo'waa'taawgizinid gonda zhiwe gaa bi wiidookaaz'jig, wii mina waam'goom'ding miinwaa wii maaj'taa'toong eshka'ye'wang nendmowin, ewiik'ji'chi'gaadeg miinwaa ezhi wiw'ni'nend'ming. Gonda NWMO dbasendmitaawgizi dash wiigwa na'ye wiik'jich'gewin zhich'gaade kina mzoo'we wii wiindmoowndwaa Anishinaabeg miinwaa zhiwe end'na'kii'at. Gii temgad wiigwa aanind gbaawk'sich'gewin maanda naa ooshmi wii nsastaming dbishkoo gonaa gaawii gii dgongaa'siiwag Kitchi Giwedinong enjbaajig (Inuit). Aanwi go manda kidwin "Jida gonaa enjbaajig" nakaazam mziniganing, mii wiigwa ezhi nsastaagok Ntam Gaa Yaadjig miinwaa Aabtoo-ziihnyig gii dgo'jiindwaa kina zhinda [What We Heard Report 2 – Indigenous Engagement](#), miinwaa kidwinan zhinda ezhbiigaadegin gaawii kina wiya go dgwaap kaaz sii.

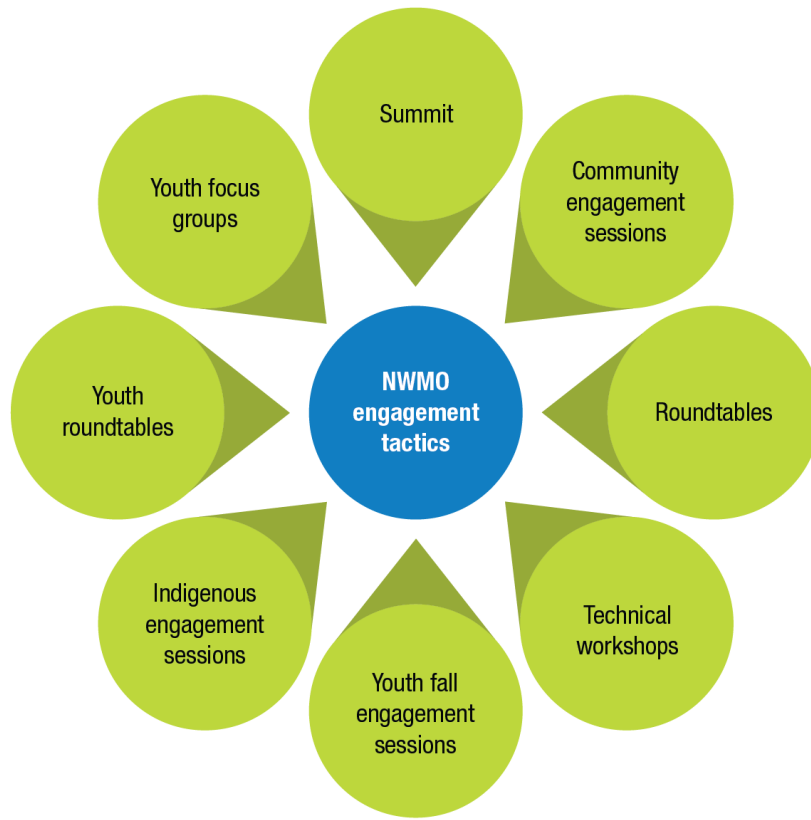


Figure 2: ISRW engagement activities

AANKINOOTMING MEZNIBIIGAADEG:

Bijja'ing Wow'yedwan	NWMO Tkweshkdaadwin waa nda zhichged
Zaag'ja'ying gija'ying ni maajtaam Dibagiswaan dbishkoo nikeyaa	Memaanji shpaamgak go Tkweshkdaadwin Oodenwinhsan Pa piichin Tkweshkdaading Giitaad'bing Biiyaab'ko'ii nda kenjgewin Eshkiniigjig Tkweshkadaadwad Anishinaabeg Tkweshkdaadwaad Eshkiniigjig Giitaadbiwaad Eshkiniigjig nda kendaan tkweshkdaadwin

Ninda gaa bi zikaag NWMO gii tkweshkdaading

Niindan bangii dibaate gaa dibaachigaadeg memdige gaa zaagiyeb'demgag pii gii tkweshkdaading maanpii KinaDaa Wiikbidoong Da Zhichgeng Enwe'eg Biwgzige Wenjishzinok nji.

MEMAANJI KITCHI AAWANG 1 – WAANKIIWIN KITCHI AAWAN

Waankiiwin go kina goji maanda epiichi miikming miinwaa maajibdeg maanda Wiikbidoong Wii Nda Zhichgeng enwe'eg biwgzige wenjishzinok nji mii gaa maanji kitchi dibaateg gaa zaagii'webdeg gii tkweshkdaading. Gaa wiidookaazjig gii zhibiyyaa'naa'waa waankiiwin ooshmi kitchi piitendaagod piidash wii zhaabwiichgeng engendeg. Mii dash maanda getchi shpendaagog, waankiiwin aabdeg wii mkwenjigaade wodi go kitchi gbeyng miidash maanda Da zhichgeng ji yaamwaat wii ginawaabdamwaat kitchi gbeyng waani zhiwebag miinwaa ji de tkwetmoowaad aanii go ge zhiwebkibaa miinwaa ji miigwe'aad waankiiwin zhiwe waankii'end'daag'sinok miinwaa gaawii mshko'tkokiisnoomgag waa ni zhiwebag gojiing kina goji, kitchi gimaanaang, mzoowe bemaadzidjig miinwaa go kina biyaabko'ii enkaazang.

MEMAANJI KITCHI AAWANG 2 – MII GOM'BE JI NDA ZHICHGEYING

Nda'wen'daagod wii temgag nda zhichgewin, miinwaa waazhi miik'ming maanda kitchi gbeyng wii minzhaandming noonch bangii eyaawang miinwaa aabtoo'wiyng etemgag wenjishzinok naa wiini dbizh'mo'waad weweni. Gii debwetaadwag dash mii go wek ji zhichgeng wii temgag miinwaa wii nda zhichgeng wii teg waa naagdoong maanda nji KinaDaa enwe'eg biwgzige wenjishzinok miinwaa go wewiip, jiiwbwaa miindwaa gonda waa bi yaajig maanda wii ni moond'mo'waat.

MEMAANJI KITCHI AAWANG 3 – GIIGDOOWIN MIINWAA ZHII'BAA'AABWIN

Gonda gaa wiidookaazjig wek gii dibaajmoo'wag na'ye weweni gzhi'iyeng, debwetaadwin, dgojiinding giigdoowin miigweng getchi aawang, edebnigaadeg weweni, miinwaa gaawii wiiwbwaa maa'naa'zaam'da'ming ndawendaagod. Ezhi'baa'aak miinwaa dgotek, nesaawksing miinwaa eminabdeg giigdoowin weweni wii naawkinigeng miinwaa wii minabdeg aapiji kitchi piitendaagod. Weweni go ginoowaabjigaadeg miinwaa zhiibaa'aamdaming ezhwebag zhinda maanda wenjishzinok nji miinwaa ge zhi niizaan'kiba go ga'ye ndawendaag'sinoo, miinwaa go weweni wii giigdag pii nda'wen'daagog. Aanind go gaa wiidookaazjig gii kidwag weweni ji waam'ji'gaa'degba maanda wenjishzinok ezhi maawnji'sing, etegin megwaa miinwaa go waa'bi tegin yaabi.

MEMAANJI KITCHI AAWANG 4 – WAANKIYENMINDWAA MIINWAA MINO'WAAM'GOOMJIGAADEG ANISHNAABE OODENWINHSAN

Gegoo yaawang tkweshkdaadwin miinwaa yaab'jibdeg minowaam'goom'jigaazwaat Anishinaabe aabdig wii temgad naa'naaw'goo'ying maanda zhitoong miinwaa mibdetoong enaawkinigeng. Bzindwindwaa Anishinaabeg aapiji kitchi nendaawgod wii maajii waankii'waat, wii min'waa'goom'ding miinwaa kitchi piitendaagod wii naasko'daading. Aabdeg go dgonming Anishinaabe kendaaswin miinwaa go zhaagnaash ga'ye ezhi kendaasat go ga'ye gii zhibiigaade aapiji kitchi piitendaagog zhinda wii nda zhichgeng bekish gi'noo'waab'da'ming waasaa waa ani zhiwebag miinwaa go nango aabdig waa mkwenjigaadegin. Gonda gaa bi wiidookaazjig ndawenda'naawaa Anishinaabeg wii yaam'waat zhinda Nda Zhichgeng wenpash, jiiwbwaa miinwaa bgidnegeng wii zhawebag miinwaa jiiwbwaa nshinaajiikaagewin nokmiigziwin ga'yinwaa dgobzoo'waat zhinda.

MEMAANJI KITCHI AAWANG 5 – KENJGEWIN MIINWAA TKWESHKDAADWIN

Aabdig go mooshkin tkweshkdaadwin wii temgag wii kzhkitoong kina wiya wii debwetang maanda Nda Zhichgewin wii nokiimgag maanpii KinaDaa miinwaa kitchi piitendaagod wii wiidookaazwaat ga'yinwaa eshki maadzidjig. Kenjgewin aapiji kitchi piitendaagod wii kendmoowaat bemaadzidjig epsikaagod miinwaa endnokiiyaad wii kendmoo'waat enkamigadnik, miinwa dash aabdeg ooshmi wii dgopkaazwaat zhinda dibaajmaataading wii naadmoondwaa KinaDaa bemaadzidjig miinwaa go Anishinaabeg wii nsastamwaad zhinda emaanenjemgak nji maanda enwe'eg biwgzige wenjishzinok miinwaa waazhi debwetming

waankiiwin wii temgag. Nda kendming dash go ga'ye maanda zhaagnaash ga'ye ezhi kendaasat ezhi mina nokiing mzoowe kina akiing go ga'ye gii dibaachigaade aapiji kitchi piitendaagot wii d'gonming waankiiwin miinwaa engendek dbaamdaming, nango go miinwaa go waani aawang. Eshki maadzidjig gii waabdaanaawaa ji tegba tinow waanii'aan'ke'shkaajig kenjgewin da zhichgewin wii maajiiging naa mko'waam'win miinwaa zoong'gaabwi'win maanda nji gbeying waani teg Nda Zhichgewin mkwenmindwaa gonda eshki maadzidjig.

MEMAANJI KITCHI AAWANG 6 – ZHAAB'WIICHGENG MIINWAA KINA GO GOJI

Miinwaa go bekish maanda waankiiwin wii temgag oodenwising miinwaa zhiwe kina endnokiijig, gaachtoong maanda jiiwbwaa kitchi sa'we'aawng'daasang wenjishzinok wodi kina go goji miinwaa ginooowendming kina go goji memdige go nibi aapiji go kitchi piitendaagod. Gonda gaa wiidookaazjig gii maatookiiwag aabdig wii makwend'mying maanda getchi zhiwebag kina go goji naa kina maanda Nda Zhichgeng wii zhaab'wiichgeng, makwendming go ge zhiwebkiba giishpin gegoo kitchi zhiwebag gnimaa go geskana noonch gegoo wiikwaasing maanpii gda kiimnaa maage enji ne'se'ying, mnaadendmang kina go goji miinwaa naagdowendming wenjishzinok waa ani zhinaagog waa waabdamwaat gonda waa bi yaadjig yaabi. Maanda gaachtoong kina go goji wii zhiwebag daa ginawaamjigaade dibishkoo gonaa ezhi maadziimgag kina ga'ye miinwaa daa dgo'temgad wii zhitoong ninda sanjgonan miinwaa midaabaadming enwe'eg biwgzige wenjishzinok. Gaa wiidookaazjig go aapiji gii kendaanaawaa maanda gaa bi zhiwebag gaa doodwindwaa Anishinaabeg miinwaa zhiwe da kiim'waa miinwaa kina go goji miidash go maanda ge ginowaabjigaadeg pii dibaataming minig waa zhichgaadeg sanjgon gamigon miinwaa di'bi'iidig.

MEMAANJI KITCHI AAWANG 7 – MIDAABAAZHWEWIN

Gonda gaa wiidookaazjig gii baatiintonaawaa waa zhi kwedwe'at ezhi niizaanda'gwenh maanda midaabaazhwe'win miinwaa ge zhaweb'kibaa gegoo zhawebag epiichi midaabaadeg maanda enwe'eg biwgzige wenjishzinok midaabaajgaadeg, miinwaa dash gii nendmoog wii gaach'too'waad midaabaadeg enwe'eg biwgzige wenjishzinok gegoo wii bwaa zhiwebag. Aanind gegwa ewii'ni'nen'daagok aawan engendeg, megwaach ji giikseg zhaawshkwa wiigwaamenhsan mide ezaagdaasing miinwaa ge zhi binaadchigaadek kojiing kina goji waa zhiwebag zhichgaadeg shki miikanan. Gaa bi wiidookaazjig gaazhi waabdamwaat ge zhiwebkibaa niizaansing maanda midaabaadeg gii aanjtoonaawaa da nendmoowinwaa wii temgag gweta bezhig aabtoo'wiyig wii teg noonch bangii yaawang maage aabtoo'wiyig wenjishzinok, maage wii temgag niibina go waanji ziigwebnigeng besha wodi enjizhichgaadeg wenjishzinok. Gii temgad go ndawendmoowin wii dgobing pii gegoo wii zhichgeng maanda midaabaajgaadeg ge'te akiing.

MEMAANJI KITCHI AAWANG 8 – NAADMAADING WII ZHICHGENG ENAABIISING/NCHIKE JI NAANIIBWIMGAG NENDAAGOD

Gii tenwan go noonch ezhi ginawaabjigaadeg egwendig waa penman'dwin wii baashzaamdamg maanda Da Zhichgewin. Gii tenwan go bebkaan enendgig enaangzhemgag maanda tinow nokiiwin. Gii temgad dash wiigwa debwetaadwin wii temgag bezhig eta ge yang kitchi kshkewziwin goji bkaan enjbaad enchikewgaabwid gaawii wiiw'waasiin niwe maanda gonaa njida enjiik'gik, ji naagdoong dash wiigwa waankiiwin miinwaa gojiing kina go goji da ginowaabdaan kina go. Maanda tinow gimaawin ga'ye bkaan go ga'ye nendam, aanind gegwa kidwag maanda baashzaamdiwin gimaakaan da yaawag zhinda tinow jida enkiijig, bemaadzidjig enaapkaazwaat, Anishinaabeg, miinwaa go aanind kidwag gonda ge dbaamdaming maanda baashzaamdawin enaapkaazjig aabdig wii nchikegaabwiwag bekish yaamwaad ga'yenwaa ezhi miingowewziwaad. Gii kitchi aasgaabwichgaade dash gonda wenjishzinok debendgik wii dba'moowaad maanda wii Nda Zhichgeng.

MEMAANJI KITCHI AAWANG 9 – AANKENMOWIN NAAGDOWENJGEWIN MIINWAA WENJISHZINOK ZIGWEBNAMING

Kitchi niibina go gii aasgaabwit'taa'naa'waa owe nendmowin naa ji mkigaadegba waa zhichgeng wii gbaak'koming go pane enji ziigweb'nigeng be go, miinwaa dash go gaawii wii ngad'moond'waa gonda waa bi yaa'jik maanda. Gaawii kenjgaadesnoo waa bi zhiwebag, miinwaa ge pii waa zhiwebak aanji gimaa keng maage go bemaadzidjig daa ngad'daa'naa'waa wenjishzinok wii niizaan'sing goji ekenjgaadesinok temgak mii owe gaa zhi wiiwni'nendmoowaat aanind gaa dibaatek. Gaa bi wiidookaazjig wii waamdaa'naawaa owe aabtoo'wiyig etemgak wenjishzinok ga'ye dbishkoo owe memaanji niizaanag wenjishzinok minwaa go ji

ziigwebnigaadek go ga'ye kitchi naam'yaying. Yaa'wag dash go ga'ye aanind ewaabdamwaad owe aankenmaagewin naagdoowenjgewin ge maanji nishingban, memdige go noonch bangii yaawang wenjishzinok, mkwenjgaadek gonaa waabi zhiwebak biyaabkoo'ii shka'ye, miinwaa ginoowaabdaming maanda wenjishzinok gawii gii nenj'gaa'des'noo, miinwaa naa wii aabiji ka'waabjigaadek gegoo ji bwa zhiwebak kojiing kina go goji ji de kinwaaj'biigeng miinwaa wii naaw'biigeng jiiwbwa kitchi zhiwebag gegoo memdige go nbiing nika'yaa.

MEMAANJI KITCHI AAWANG 10 – (DGOSING MIINWAA NAASAAB GINOOWENJGAADEG

Noonch go gii zhi tkwetmook gaa bi wiidookaazjig. Gii nendmoog go daa nishin ji gaajtoongba ninda sanjgon gamigon. Gaa wiidookaazjig gii nsid'waab'daa'naawaa epiichi znagag wii mkoowin ge wiik'ge'pa wii tkwesh'daading miinwaa bekish jiwii kenjige'waat ezhwe'bag maanpii oodenwinhsing. Znagad go ga'ye wii debnaming oowe wenspash, jiiwbwa kendming owe bigidnigewin gegoo wii mi nan'kiing. Mii dash enji znagag zhinda niibina sanjgonan wii mi zhitoong. Aanwi dash wiigwa, temgad go ezhi wiw'ni nendming maanda bezhig wii temgag miinwaa waa zhi midaabaa'jigaadeg wenjishzinok. Aanind go gonda gaa wiidookaazjig gii mkoo'waabgewag ezhi kitchi aawang yaaming owe biyaab'ko'ii zhichgewinan wii nakaazang zhinda minik etegin tinowan wenjishzinok naasaab go ji sanjgoong, miinwaa dash go aanin gii kidwag miigwaa zhiwe ge zhi zhaabwiichigengban temgag go zhiwe kina naasaab.

Niibina go bashgendaa'naawaa ji nakaazgiba now'goying etemgag wii chigaadeg maanda nowgoying wenjishzinok eyaawang ji'de mina koo'waab'dam'waat miinwaa wii minzhaandmoo'waat eko maadziimgag go, miinwaa ginimaa ji'de zhaab'wii chige'yaapa engend'deg miinwaa ekom'gag. Nowgoying temgag maanda nowgo'ying wenjishzinok waabjigaa'de ji nishingba jiiwbwa temgag niizaanziwin zhiwe gaa dash wiigwa da nii'zaan'siniwan niibina giispin tegba'ne mkwendaming gonaa maanda kina goji akiing. Maanda (collocation and centralization) gii mina daapnigaa'de ooshmi nowgoo'ying miinwaa memaanji niizaanag wenjishzinok, piidash wiigwa bangii yaawang miinwaa now'goying etemgag. Ekoobiig maanda bangii yaawang wenjishzinok ooshmi aawan, miinwaa gonda ewiidookaazjik gii nendmoog bgidnaming zhiwe besha enji temgag wii sgaksing piidash wiigwa wii maajiidaabaajgaadeg goji kitchi waa'saa gii nendmoog ji nishingba. Dibiidig dash go wii tegwenh ge pshagendmoowaat, oodenwinhsing enjibaajig aabdig wii mnendmoowaat dibiidig wii tegweh maanda wenjishzinok wii ziigwebnigeng.

MEMAANJI KITCHI AAWANG 11 – KINA DA ENJBAAJIG MIINWAA ANISHNAABEG NDA ZHICHGEWIN

Aapiji go gii naa'god gonda gaa wiidookaazjig wii yaamwaat maanda Nda Zhichgewin wii temgag mii nwaa Kina Daa bemaadzidjig miinwaa Anishinaabeg ji zhitoowaapaa maanda, miidash maanda ge zhi msom'jigaadeg. E bezhgong go Nda Zhichgewin aawan ge waase'aa'min'aagok Nda Zhichgewin. Miinwaa dash, maaba ISRW da mkwendaan ji too'pa enweg go waa sam'naagok miinwaa ji mkwendang maanda kojiing kina go goji, miinwaa go engo'kwaak maanda Aki, kina ezhi bebkaan'ziinh'ying miinwaa Anishinaabeg ga'ye nwaa dgo gaab'wi'yaat miinwaa go ezhi aandseg kojiing ezhwebag.



Edming Kitchi Kidwinan miinwaa Tkoobii'gaadeg

Gepgaak waa nakaazang: Waa nakaazang dbishkoo gonaa zhashki tinow, goji epgijgaadeg esiniiwang, maage enkaazang zhigewin goji epgijgaadek.

Kitchi Sinii Mkak: Kitchi Sinii Mkakoon zhichgaadenoon besha gidjaying besha enji ziiigwebnigeng kina goji enkaazang mzoowe akiing wii ziiigwebnigaadeg noonch bangii enwe'eg biwzgize wenjishzinok. Ninda kitchi sinii mkakoon zhinaagdoon getchi mchaagin sinii mkakoon miinwaa owe sanjgon da tenwan gmaamnig go ninda tanoowan. Endsa bebezhiig go daa temgad waan ji ziiigjiwang miinwaa da temgad "aki'ii gba'gan" nakaazang niibina naawng'giseeg zhashki, miishkoonhsan miinwaa aanind ezaak'kiig aking. Maanda tinow ziiigwebnigewin da nakaazam noonch go tinow enkam'gaag. Maanda tinow ziiigwebnige'win daa nakaazam go noonch enkamgaag. Daa aanke'chigaade'noon gegwa, piichin go daa aankesjigaade'noon ezhi ndawendaagok go.

Kitchi waankaagan: Kitchi waankaagan waanji ziiigwebnigeng geshkam go zaagii'yebdemgad wii nakaazang nji maanda wenjishzinok waa nchiketeg gitchi gbeyeng maa'ge go ngod'waag nsa biboon ooshmi. Daa nishin wiigwa wii ziiigwebnaming bem'gii maanda aabtoo'wiying wenjishzinok. Ninda kitchi waankaaganan megwaach naanwaag piinish mdaaswaag shi dbagan minig ninda wenjishzinok shkapjiganan daa niisnigaadenwan zhichgaadeg kitchi sanjgon naamkamig.

Kitchi Moon'igan: Genoosing kitchi moon'igan tenwan niibina enaabiising naamkamig miinwaa aachkingaanhsan chigaadeg wenjishzinok ngodwaag shi dbagan ooshmi naamkamig. Ninda sanjgonan zhichgaadenoon wii taasang niibina waa zhi gbageng: gbagewin wii chigaadeg wenjishzinok miinwaa go wii chigaadeg aking enjbaamgag wii gbageng jibwaa ziiigjiwang miinwaa wiibwaa baamenmigwaad bemaadzidjig miinwaa zhiwe gii'taa'ying.

Ziiigweb'nigeng: Chigaadeg wenjishzinok wiikaa go jibwaa paamendming.

Zhichgaadeg Wii Taasang Wow'ye'aag gamig: Maanda zhichgaadeg wii taasang wow'ye'gamigoon zhich'gaadenoon besha go git'kamig wii chigaadeg wenjishzinok ebiishwang miidash miinwaa gbagaadeg noonch gegoo akiing enjibaamgak dibishkoo gonaa aki'ii maage waabgan. Niibina go sha'weg'sidji'gaade nonch ezhi'gak wiibwaa ziiig'seg kina go goji. Ninda tinow gamigon temgad ewiinaagmig waa zhi ni ziiigseg miinwaa wazhi mshkikee kaadeg. Maanda zhichgaadeg wii taasang wow'ye'aag gamig nishin chigaadeg bangii noondaash yaawang wenjishzinok gaawii ge ni bangii aawzinok maage ge jiiigshkaag zhiwe tatek.

Memaanji Niizaanak Wenjishzinok: Memaanji Niizaanak enwe'eg biwzgize wenjishzinok mem'dige go nakaaz'zam ezhi mide'wang miinwaa owe wenjishzinok zhoo'amgad wii gzhideg nakaazang owe benaadag. Memaanji niizaanak enwe'eg biwzgize wenjishzinok dgomgad wii temgag owzhi kitchi gzhideg aabdig dash wii goozhe'ming weweni. Memaanji Niizaanak wenjishzinok ge temgad niibna go kitchi gbeying gaa maadziimgag zhiwe miidash maanda enji dawendaagog wii sgaksing kitchi gbeying. Chigaadeg kitchi naamkamig, wanji sgaksing megwaach go ngodwaak shi dibagan zhiwe naam'kaming weweni gonaa wii sgaksing kitchi gbeying maanda memaanji niizaanak wenjishzinok. Emidewiznok memaanji niizaanak wenjishzinok gaawii nakaaz'siim cobalt-60 gibagaade we pii.

Aabtooying Etemgak Wenjishzinok: Aabtooying Etemgak enwe'eg biwzgize wenjishzinok jibaamgad waasmowin enji nokiimgag. Megwaach gonaa maage go mzinii tnawaon dakenjgewinan wiindaakenjgeng enkaazang miinwaa go dakenjgen gamigon, miinwaa (radioisotope) eshtoojig miinwaa enkaazang. Aabtooying etemgak wenjishzinok temgad kitchi gbeying (radionuclides) gmaamnig go wii ndawendaagog go wiinchikewsing kitchi gbeying ooshmi go ngodwaag biboongag. Aabtooying etemgak wenjishzinok gaawii memkaach wiya wii ginoowendang maage go weta bangii da ginoowenjgaade pii bgidnigaadeg ezhi gzhidemgak maage wii ziiigwebnaming. Nzaam gbeying maadziimgag ninda (radionuclides), maanda abtoo'ying etemgak wenjishzinok nda'wendaan weweni wii gbaak'ko'gaadeg miinwaa wii nchike'teg piidash wiigo zhinda gegaa go gidji akiing etegin wii sanjgong.

Maanda wenjishzinok ndawendaagot wii ziiigwebnaming kitchi naamkamik ooshmi go ngodwaag shi zit maage go ooshmi.

Noomog minzhaandming: Noomog minzhaandming wenjishzinok enwe'eg biwgzige waasmowin wenjishzinok sanjgong maage ziiigwebnaming.

Noonch bangii wenjishzinok: Bangii noonch yaawang enwe'eg biwgzige wenjishzinok jibaamgad zhiwe enkaazang wii mibdegin nakiwinan wodi aawkziigamigong, kenjgegamiigooon, nakiigamiigooon gegoo zengag wii zhitoong. Bangii noondaash yaawang wenjishzinok dgosin maanda (radionuclide) ooshmi aawan edaapnigaadeg miinwaa gede wenpash jiwang (edaapnigaadeg zhinda [Nuclear Substances and Radiation Devices Regulations](#)), temgad dash wiigwa aanind gbeying gaa maadziimgag. Maandaa bangii noondaash yaawang wenjishzinok wii nchikesing miinwaa wii gbaakwaming kitchi gbeying megwaach go ngodwaag nsa biboon. Wedi enakiichgaadeg wanji ziiigwebnigeng gegaa go gija'ing akiing mii zhinda tinow.

Radionuclide: N'ye maanda aapiji go gaawii waankiiyendaawksinoo endgwenh go ji baashkijii'aasing maa'ge go da ni nboom'gad ani binaadag, daa saweshkaa dash wiigwa gmaapiich. Biwgizi waasmoonenhs kinwaach'chigaazwag minig etemgag miinwaa engizwaat.

Aankenmowin Naagdawenjgewin: Aankenmowin Naagdawenjgewin zhinkaade maanda wii minzhaandming ninda en'we'eg biiwgizigesegin gaadash gegoo tesnoo wanji ziiigwebnigeng wiiba. Maanpii dash Aankenmowin Naagdawenjgewin, maanda en'we'eg biwgizigesewin wenjishzinok, daa ginowenjigaade gija akiing bemaadziidjig genji ginoowendmoowaat kitchi gbeying dbishkoo gonaa, pagdoon maanda enwe'eg biiwgizigesewin (wii ani aankeshkaag). Mii maanda ekidoomgag maanda biyaabko'ii da ani kitchi weksidoon maanda kitchi gbeying waa doodming wenjishzinok daa binaadad maage daa ni ngon'naagod.

Moonaming wii sanjgoong: Wii moonaming wii sanjgoong mche zhichgaade gegaa go zhiwe giji akiing wii ziiigwebnigeng maanda noonch bangii wenjishzinok maage go owe aabtoo'wiing eteg wenjishzinok. Gmaamnik go ninda waankaadenwan megwaach go naanmidnaa maa'ge go ngod'waag zhi zit naami sin kiki. Daa biindgem go zhinda gaan nji waankeng.

Egaaching'gin Baamskobdegin wii maajibdeg gegoo: Egaaching'gin baamskobdegin wii maajibdeg gegoo zhichigaade waasmowin piinish go nswaag minig ezhi dbageng, bangii go noondaash piidash kitchi waasmowin enkaazang wii mibdeg gegoo.

Wejishzinok: Maanpii dash gaa noondmaang mziniganing, wenjishzinok nenjigaade aawang en'we'eg biiwgizigesewin wenjishzinok ginimaa dash wiigo daa bkaanat naangodnoong. (gaawii aawzino biwgzige wenjishzinok)

Wenjishzinok debendang: Maanda enwe'eg biwgizigese wenjishzinok debendang aawag endaapkaazjig enkiitam'majig maanda.

Wenjishzinok eshtood: Maanda enwe'eg biwgizigeseg wenjishzinok eshtood mii giiwe en'naap'kaazjig zhiwe ndan'kiw'ni'waa eshtoojig maanda en'we'eg biwgizigeseg wenjishzinok.

Dekoobiigaadeg

AACE	Enaapkaazjig wii Niigaanwiwdoowaat Engendeg Biimskwaabkewin
AECL	Biwgzige Tinow Kina Daa Ezhi Dgwaapkaadeg
APM	Ginowenjgaadeg Gaanakaazang Wenjishzinok Minzhaandjigewin
CANDU	Kina Daa Deuterium Mkadewaabik
CNL	Kina Daa Biwgzige Waasmoowin Enji Dakenjeng gamig
CNSC	Kina Daa Biwgzige Waasmowin Waankiiwin Enaapkaazjig
CSA	Kina Daa Edbizhgejig Ezhgaabwidjig
DGR	Kitchi Moonigan
HLW	Memaanji Niizaanak Wenjishzinok
HQ	Waasmoowin-Québec
ILW	Aabtoo'wiyig Etemgag Wenjishzinok
ISRW	Wiikbidoong Kina Gegoo Wii Nda Zhichgeng Maanda Enwe'eg Biwgzige Wenjishzinok
LLW	Noonch Bangii Wenjishzinok
N/A	Gaawii Gegoo
NPD	Biwgzige Waasmowin Zhinoomaagewin
NRCan	Kojiing kina Gegoo Eteg Enkaazang Kina Daa
NSDF	Besha Giji Akiing Ziigwebnigeng gamig
NWMO	Biwgzige Waasmowin Eminzhaandgig Enaapkaazjig
OPG	Ontario Waasmoowin Wiikjichigaadeg
PHAI	Port Hope Nike'yah Maajtaadwin Wii Nda Zhichge'yaad
SMR	Egaaching'gin Baamskobdegin Wii Maajibdeg Gegoo
WR-1	Whiteshell Nokii'waanhsan 1

Enjbideg Debaateg

¹ Canada's Policy for Radioactive Waste Management and Decommissioning. (2023). *Natural Resources Canada*. https://natural-resources.canada.ca/sites/nrcan/files/energy/pdf/RadWasteDecomPolicy_2023.pdf

² O'Regan, Hon. S. (2020, November 13). Tasking Letter - Integrated Strategy for Radioactive Waste. *NWMO*. Nuclear Waste Management Organization. Retrieved 2023, <https://www.nwmo.ca/~media/Site/Files/PDFs/2020/11/16/00/47/188938-MIN-SIGNED-LETTER-en.ashx?la=en>.

³ The scope of the ISRW aligns with Canada's Policy; it excludes considerations of reprocessing, waste from operations of the Department of National Defence, and naturally occurring radioactive material. Canada's Policy for Radioactive Waste Management and Decommissioning. (2023). *Natural Resources Canada*. https://natural-resources.canada.ca/sites/nrcan/files/energy/pdf/RadWasteDecomPolicy_2023.pdf

⁴ The volume identified is rounded up and represents a conservative estimate based on doubling the data provided about inventory of non-fuel high-level waste in Canada. Inventory of Radioactive Waste in Canada 2019. (2021). *Natural Resources Canada*, 51. <https://natural-resources.canada.ca/sites/nrcan/files/energy/pdf/uranium-nuclear/RadWaste%20Inventory%20Report%20-%20ENG.pdf>

⁵ Mahoney, B., Zigin, M., & Gihm, B. (2021). Cost Estimate. (J. O. C. Imrie & G. Schneider, Eds.). *Nuclear Waste Management Organization - Integrated Strategy for Radioactive Waste*. https://radwasteplanning.ca/sites/default/files/h365930-00000-200-066-0002_0_v1

⁶ Government of Canada. (2021, May 19). *Seventh Canadian National Report for the Joint Convention*. Canadian Nuclear Safety Commission. <https://nuclearsafety.gc.ca/eng/resources/publications/reports/jointconvention/seventh-report/seventh-report-joint-convention.cfm>

⁷ Canada's Policy for Radioactive Waste Management and Decommissioning. (2023). *Natural Resources Canada*, Clause 2.0 and Clause 3.0. https://natural-resources.canada.ca/sites/nrcan/files/energy/pdf/RadWasteDecomPolicy_2023.pdf

⁸ Canada's Policy for Radioactive Waste Management and Decommissioning. (2023). *Natural Resources Canada*, Clause 1.0. https://natural-resources.canada.ca/sites/nrcan/files/energy/pdf/RadWasteDecomPolicy_2023.pdf

⁹ Canada's Policy for Radioactive Waste Management and Decommissioning. (2023). *Natural Resources Canada*, Policy 1.4. https://natural-resources.canada.ca/sites/nrcan/files/energy/pdf/RadWasteDecomPolicy_2023.pdf





¹⁰ Canada's Policy for Radioactive Waste Management and Decommissioning. (2023). *Natural Resources Canada*, Clause 1.0 and Clause 2.0. https://natural-resources.canada.ca/sites/nrcan/files/energy/pdf/RadWasteDecomPolicy_2023.pdf

¹¹ Nuclear Waste Management Organization. (2022). (rep.). *Indigenous Engagement What We Heard Report (Apr '21 - Mar '22)*. Retrieved 2023, from https://radwasteplanning.ca/sites/default/files/wwhr_indigenous_1_en_final_5july2022.pdf.

¹² Government of Canada. (2023, May 17). Nuclear Substances and Radiation Devices Regulations. Justice Laws Website. <https://laws-lois.justice.gc.ca/eng/regulations/sor-2000-207/index.html>

**Giishpin ooshmi wii kendman
gegoo
Maanpii gdaa zhi nda'kenj'ge:**

Biwgzige Waasmowin Wenjishzinok Minzhaandming
Enaapkaazwaat
22 St. Clair Avenue East, Fourth Floor
Toronto, ON M4T 2S3, Canada
Tel.: 416.934.9814 Toll free: 1.866.249.6966
Email: info@radwasteplanning.ca
Website: www.nwmo.ca

   @nwmocanada
 /company/nwmocanada

nwmo

NUCLEAR WASTE MANAGEMENT ORGANIZATION SOCIÉTÉ DE GESTION DES DÉCHETS NUCLÉAIRES

© 2023 Nuclear Waste Management Organization